

Mitchell EMC



The news
you need to
know in
.5 minutes!

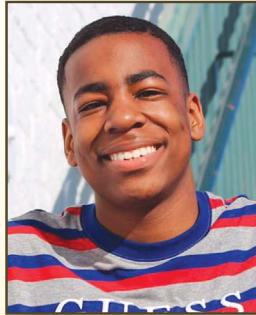
CAMILLA, GEORGIA
www.mitchellemc.com



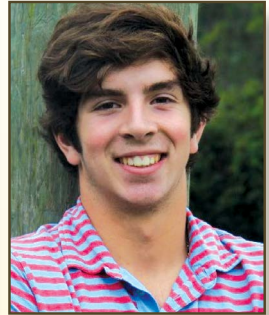
Brian Luke Cooper



Landon Davidson



Mychael Hall



Slater Stringer

Local Students Named Mitchell EMC Delegates for Washington Youth Tour

Brian Luke Cooper, Worth County High School; Landon Davidson, Sherwood Christian Academy; Mychael Hall, Deerfield Windsor School; Slater Stringer, Westwood School have been selected to attend the 54th annual Washington Youth Tour, a once in a lifetime leadership experience made possible through the generosity of the electric membership cooperatives (EMCs) in Georgia, including Mitchell EMC.

According to Heather Greene with Mitchell EMC, it is an honor to be chosen for the trip. Candidates compete for a spot alongside other teens who are community volunteers in a variety of youth service organizations, student athletes, and members of respected academic organizations such as Beta Club, National Honor Society, Student Council, Key Club, Debate Club, Future Business Leaders of America, Interact Club, and Science Olympiad, as well as other notable clubs and associations.

Mitchell EMC says the Youth Tour was established to inspire the next generation of leaders. This year's tour, which takes place June 13-20, will expose students to the fast-paced world of politics and leadership.

Four students and one alternate were carefully selected through an application process which included an interview process after they were nominated by their school guidance counselor.

Former delegates and participating EMCs agree the Youth Tour has grown into an invaluable program that gives young adults an experience that will stay with them for the rest of their lives.

Provide a quote from a former delegate or use this one: "I imagined what this trip was going to be like but it was better, and exceeded my every expectation," recalls a recent delegate "Don't be surprised when you come home saying it was the best trip of your entire life."

Students Delegates will explore government on a local and national level, gathering in Atlanta before departing for Washington, D.C. While visiting our nation's capital the delegates will have the opportunity to meet with their elected officials to discuss and learn about issues that are important locally.

The Georgia delegation will join more than 1,700 additional youth representing cooperatives across the nation. The students will have the opportunity to exchange ideas and views about local and national issues with peers from other states.

"I learned that no matter how young I am, my voice matters," noted a former delegate.

Since 1965, the Washington Youth Tour has given more than 3,000 students from Georgia and more than 50,000 nationwide the opportunity to take part in this unique experience. President Lyndon Johnson initially requested the program to "send youngsters to the nation's capital where they can actually see what the flag stands for and represents."

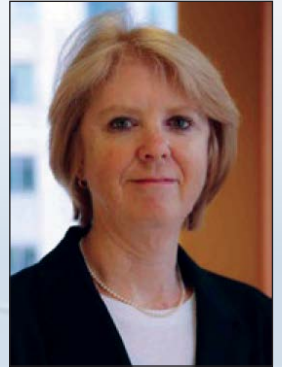
Mitchell EMC is a consumer-owned cooperative providing electricity and related services to 15,830 members in Baker, Calhoun, Colquitt, Decatur, Dougherty, Early, Grady, Lee, Miller, Mitchell, Thomas, Tift, Turner and Worth counties.

The Commitment of an Electric Lineworker

By Anne Prince

National studies consistently rank power line installers and repairers among the most dangerous jobs in the country, and for good reason. Laboring high in the air wearing heavy equipment and working directly with high voltage creates the perfect storm of a dangerous and unforgiving profession. But electric lineworkers are up to the task. These brave men and women are committed to safety, as well as the challenges of the job.

Mitchell EMC's lineworkers are responsible for keeping power flowing day and night, regardless of national holidays, vacations, birthdays, weddings or other important family milestones. Beyond the years of specialized training and apprenticeships, it takes internal fortitude and a mission-oriented outlook to be a good lineworker. In fact, this service-oriented mentality is a hallmark characteristic of lineworkers. The job requires lineworkers to set aside their personal priorities to better serve their local community.



Anne Prince

Family Support System

To perform their jobs successfully, lineworkers depend on their years of training, experience and each other to get the job done safely.

Equally important is their reliance on a strong support system at home. A lineworker's family understands and supports their loved one's commitment to the greater community during severe storms and power outages.

This means in times of prolonged outages, the family and their lineworker may have minimal communication and not see each other for several days. Without strong family support and understanding, this challenging job would be all the more difficult.

Community Commitment

In Mitchell EMC's service area and across the country, electric co-op lineworkers' mission-focused mentality of helping others often extends beyond their commitment to their work at the co-op. Lineworkers are often familiar figures in the community. They can be found coaching youth sports teams, volunteering for local charities and serving on local advisory boards.

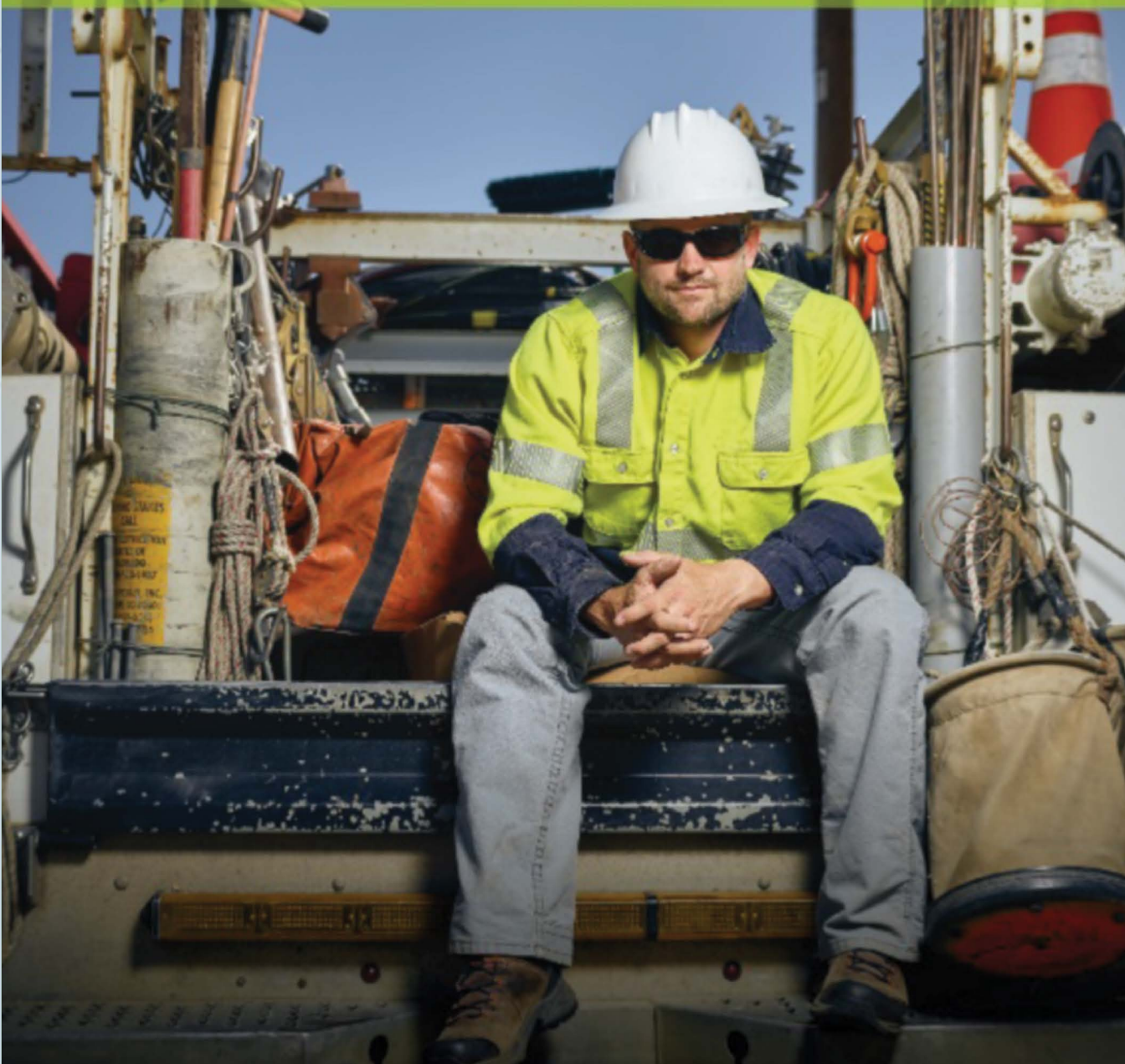
Thank You

Monday, April 8 is Lineworker Appreciation Day. Given the dedication of Mitchell EMC's lineworkers, both on and off the job, I encourage you to take a moment and acknowledge the many contributions they make to our local community. And if you see their family members in the grocery store or out and about in the town, please offer them a thank you as well.

Anne Prince writes on consumer and cooperative affairs for the National Rural Electric Cooperative Association, the national trade association representing more than 900 local electric cooperatives. From growing suburbs to remote farming communities, electric co-ops serve as engines of economic development for 42 million Americans across 56 percent of the nation's landscape.

**Committed to the job,
Committed to safety.
Committed to you,
our members.**

Lineworker Appreciation Day
April 8, 2019



Serving in 14 Southwest Georgia Counties...



BENEFITS OF TREE TRIMMING

Clearing trees and overgrown vegetation is vital to provide safe, reliable power to our consumer-members.

We clear certain areas in our service territory, known as rights of way, to:

- Keep power lines clear of tree limbs
- Restore power outages more quickly
- Keep crews and members of our community safe
- Reduce unexpected costs for repairs

Vegetation management improves service reliability for you – our members!

Attention Farmers Just a reminder...

Time Of Use (TOU) rates for irrigation systems begins on June 1. The TOU kWh cost is based on the time of day in which it is used. The rate will distinguish between ON-PEAK and OFF-PEAK usage.

**TOU rates apply from June 1 - September 30.*
If you have any questions, please do not hesitate to contact us at 229-336-5221 or 1-800-479-6034.



Note: *If you move or no longer have electric service with Mitchell EMC, it is important that members keep their address current, so that future disbursements can be properly mailed. Capital credits are reserved for members even if they move out of the Mitchell EMC service area. Mitchell EMC will make a diligent effort to send a check by mail.*

Statement of Equal Employment Opportunity

All applicants for employment shall be considered and hired on the basis of merit, without regard to race, color, religion, sex (including pregnancy), age, national origin, disability, genetic information, or past or present military status. The employment practices shall ensure equal treatment of all employees, without discrimination as to promotion, discharge, rates of pay, fringe benefits, job training, classification, referral, and other aspects of employment, on the basis of race, color, religion, sex (including pregnancy), national origin, disability, age, genetic information, or past or present military status. M/F/V/DV/D



WATT'S COOKING



St. Paul's Rice

Ingredients:

1 lb pan sausage (spicy if you like hot,
or mild)
½ cup rice
2 pkgs. dry chicken noodle soup mix
(I use Lipton's)
4 ½ cups of water
Onion, diced optional
Green pepper, diced optional
Celery, diced optional

Directions:

Brown sausage in skillet until no longer pink and add onion, green pepper and celery if desired. Bring 4 ½ cups of water to a boil. When boiling, add rice and soup mix packets. Boil 7 minutes-spray casserole dish with cooking spray-pour soup mix and sausage mix together in casserole dish and mix well. Cover and bake at 350° for 1 hour.

Thanks!

to

Rhonda G. Graham,
Mitchell County, GA,
for sharing this recipe.

Share & Win!

Send us your favorite quick and easy dinner recipes. If your recipe is chosen for print, you can win a

\$25 credit

on your next Mitchell EMC bill.

Send recipes to: Heather Greene, P.O. Box 409,
Camilla, GA 31730 or email to
heather.greene@mitchellemc.com.